

The Goldring Classic Audio Collection

GOLDRING • GRADO • MILTY • MUSIC HALL • MYRYAD • SOUNDSTYLE

SPRING 2014



Goldring



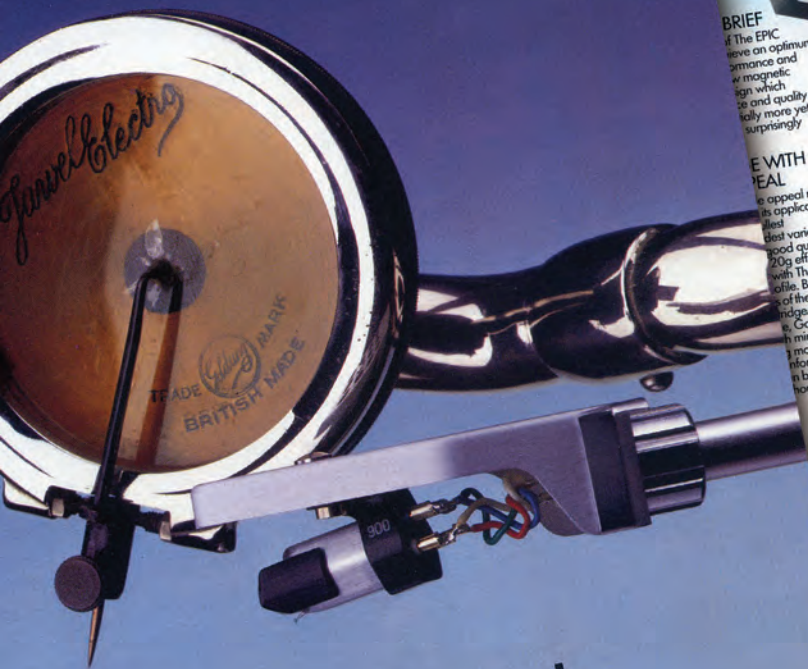
Three-way Pick-up



STANDARD
LONG PLAY
RECORD

for

Goldring
Sound pure and simple



Great British
Sound Achievements.

Goldring

Established 1906

100 years of audio excellence

Consider that short statement for a moment - and the full meaning it conveys.

1906. A time before we were born. A time when houses were lit by gaslight and only three years after the Wright brothers' historic flight, Goldring were bringing the joy of great music into people's homes.

Our rich heritage gives us exceptional knowledge and expertise concerning all things vinyl. Our cartridges, turntables and accessories have evolved from a long line of renowned predecessors. All our cartridges are hand-crafted, including the stylus mounting, wiring and coil winding.

THE PERFECT BALANCE BETWEEN PERFORMANCE AND PRICE

THE
EPIC

NEW MAGNETIC CARTRIDGE FROM GOLDRING



BRIEF
The EPIC
cartridge
is an optimum
balance of
performance and
price which
is not only
surprisingly

WITH
REAL

The appeal must
be of the highest
quality of
sound. By
using the contact
of the contact
points, Goldring
has moulded the
stylus to be screwed
into the contact
without danger

THE STYLUS

The chief variable in performance
and price between cartridges is dictated
by the material and shape of the stylus.
Low stylus mass is vital for accurate
high frequency tracking. Goldring fit
the EPIC with an elliptical diamond stylus.
This diamond tip bonded to a sapphire
shank yields a much lower tip mass
than the steel-bonded diamond usually
found in inexpensive cartridges.

The stylus block incorporates a
locking plug which slots firmly into the
body moulding, simulating the all-in-one
structure of a non-removable stylus
whilst retaining the user-convenience of
a replaceable one.

Dispensing with the traditional
tube-within-a-tube technique, the
cantilever and damping hinge fit directly
into the stylus block, eliminating another
point of energy loss.

THE GOLDRING EPIC SPEAKS FOR ITSELF:

Goldring believe that fitting a better
cartridge to your system is the quickest
way to improve the sound quality. But
no amount of rhetoric or technical
jargon can replace the experience of
listening for yourself. Ask your Goldring
dealer for a demonstration and let the
cartridge speak for itself.

TECHNICAL SPECIFICATION

TRANSDUCER CHARACTERISTICS:
MM
Cartridge type
Frequency response
20 Hz - 18 kHz ± 3 dB
2 dB at 1 kHz
Channel balance
20 dB at 1 kHz
Channel separation
55 dB ± 1.5 dB at 1 kHz
Sensitivity
1.6 mV/N
Static compliance
0.7 mg
Equivalent tip mass
2.6 g
Vertical tracking angle
0.003° (180° \times 7m)
Stylus geometry
Elliptical (0.003" \times 0.003")
Stylus type
ELECTRICAL CHARACTERISTICS:
47 kOhms
Load resistance
150 - 400 pF
400 mH
Internal inductance
425 Ohms
MECHANICAL CHARACTERISTICS:
7.0 g
Cartridge weight
0.5 (12.7mm)
Firing centres
2 g (nominal) ± 0.5 g
Playing weight



Goldring
Telephone



PROFILE

Turntable wow and flutter records are checked after tests

Sixty Years in Gramophones

FOR a family business to be in
existence for over sixty years is
certainly not a common achieve-
ment. Usually within the lifetime
of the founder, the company either
dies or it is large enough to
attract an influx of new management
or if it is too small to attract new
management, it is too small to
survive.

recently celebrated sixty years of
manufacture, with Erwin Scher-
er, the son of the founder, as
Director. Started in 1906, the
company has grown to become
one of the leading manufacturers
of gramophones in the world.

Stylus-making demands

Moving Coil Cartridges



"The Goldring Legacy has been designed impeccably well and should suit a variety of tonearms."

Hi Fi Choice
January 2010

Legacy

The Legacy boasts an ultra low resonance magnesium metal body which is both very light and extremely strong. For convenience and rigidity, it has threaded inserts allowing the cartridge to be easily mounted and accurately aligned into the headshell. The stylus is a very low mass 'Vital' fine line diamond, which is highly polished and gives extremely low distortion. To maintain rigidity, this is attached to a hard alloy cantilever which transfers the maximum level of detail from the diamond to the coils; the latter are hand wound using only the highest purity copper. To achieve the optimum compliance required to deliver a smooth, extended frequency response, the stylus damper is formed from a bespoke rubber mixture. Lastly, a precision, rare earth, Neodymium iron boron magnet helps deliver outstanding dynamics.

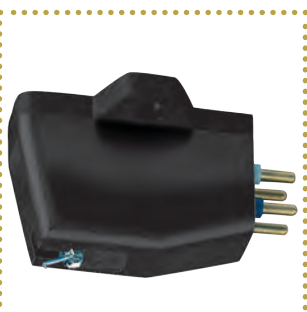


Elite

The Elite is a high-performance low-output moving coil cartridge which incorporates Goldring's most recent design features, such as new magnetic circuitry, an ultra-rigid Pocan body and a neodymium magnet. The Elite incorporates a Gyger S line contact stylus providing maximum groove information retrieval and an outstandingly smooth and extended response. Optimum damping on both channels is achieved by symmetrically winding the low-mass armature. Silver wire is used for the coils, supplying much higher definition than is found in standard cartridge construction.

"This is a remarkably subtle and persuasive design that should tempt anyone..."

Hi-Fi Choice



Eroica

The Eroica is a true audiophile moving coil cartridge which features an advanced pole shoe design using a powerful rare earth neodymium magnet. This unique construction allows a shortened magnetic path, which helps reduce the amount of iron in the cartridge, keeping the weight down to just 5.5gms. Rigidity is also of prime importance and the Pocan body of the cartridge enables it to be clamped solidly to the headshell, keeping energy losses to an absolute minimum. This cartridge uses a Gyger II line contact stylus and is available in two forms, the high output Eroica H and the low output Eroica LX. The Eroica offers an exceptionally high standard of performance and reliability.

2000 Series



2500

For use on the finest turntables, where a high output moving magnet cartridge is required. The tapered cantilever with 2 SD diamond gives a smooth but detailed sound, while the metal body delivers fine bass definition.

"Full bodied sound, easy to fit, good tonal balance, great detailing"

What Hi-Fi? Sound and Vision
March 2009



2400

Increased resolution is gained by the use of the low mass Vital diamond in tapered cantilever. The 2400 Cartridge has a metal body which improves bass power and clarity, this also ensures a secure connection to the arm.

"The 2400 is one of the best"

What Hi-Fi? Sound and Vision
October 2007



2300

Use of the acclaimed Gyger II fine line diamond offers high clarity and excellent tracking ability. This cartridge will upgrade many mid-range turntables, allowing them to produce an even finer sound.



2200

Elliptical diamond stylus and plated alloy cantilever offers high definition. The super permalloy poleshoes also give superb high quality sound.

"Full bodied sound, easy to fit, good tonal balance, great detailing"

What Hi-Fi? Sound and Vision
March 2009

2100

Dynamic sounding cartridge with elliptical diamond stylus, producing high frequency clarity and quality sound. The 2100 can be used to upgrade many budget turntables.

Stock Code	Description
GL0007M	G/Ring Legacy Cartridge
GL0010M	G/Ring Elite Cartridge
GL0015M	G/Ring Eroica-LX Cartridge
GL0020M	G/Ring Eroica-H Cartridge

Stock Code	Description
GL2500	G2500 Cartridge
GL2500/STY	2500 Replacement Stylus
GL2400	G2400 Cartridge
GL2400/STY	2400 Replacement Stylus

Stock Code	Description
GL2300	G2300 Cartridge
GL2300/STY	2300 Replacement Stylus
GL2200	G2200 Cartridge
GL2200/STY	2200 Replacement Stylus
GL2100	G2100 Cartridge
GL2100/STY	G2100 Replacement Stylus

1000 Series



1042

The Elektra is a low-cost moving magnet phono cartridge which incorporates several audiophile features. Tracking ability is excellent and this cartridge uses an elliptical stylus tip. The low-mass cantilever assembly has a surprisingly wide ranging compatibility with the best tonearms and turntables available.



1022GX

The 1022GX is recommended for the discerning listener. The diamond stylus is a Vital PH type which provides increased resolution and ensures the maximum accuracy of musical reproduction.



Elektra

The Elektra is a low-cost moving magnet phono cartridge which incorporates several audiophile features. Tracking ability is excellent and this cartridge uses an elliptical stylus tip. The low-mass cantilever assembly has a surprisingly wide ranging compatibility with the best tonearms and turntables available.



Elan

The Elan has been specifically designed to cater for the demanding audiophile on a budget and, as such, is capable of remarkable results. The cartridge has a rigid body and fully enclosed mounting lugs and represents the most versatile low-cost choice cartridge on the market.



1012GX

The Goldring 1012GX uses the acclaimed Gyger II diamond stylus. This is a fine line type which gives smooth extended high frequencies with low distortion and reproduces a highly detailed and dynamic sound. Advanced diamond tip polishing ensures excellent tracking ability and reduces record wear. The 1012GX has become one of Goldring's most popular cartridges.



1006

The Goldring 1006 is designed for owners who want to get the very best from their systems at a budget price. This cartridge has an elliptical tip for improved high frequency clarity and a powerful magnet to ensure high sensitivity.

Cartridge Refurbishment and Repair Service

Our Service.

A totally bespoke Refurbishment and Repair service for most makes and models of Cartridges and Styli, tailored individually for your customers. We offer cartridge repair, refurbishment, cleaning and retipping, whether it's moving magnet or moving coil, your customers cartridge will be handled by one of our experienced Goldring specialists.

" Ask Your Area Sales Manager For Details."



www.goldring.co.uk

Stock Code	Description
GL0025M	G1042 Cartridge
GL0030M	1022GX Cartridge
GL0035M	1012GX Cartridge
GL0040M	1006 Cartridge
GL0045M	Elektra Cartridge
GL0045M	Elan Cartridge