

**IDC**  
Klaassen



**epos**  
GOLDRING  
ESTABLISHED 1906



**Isotek**<sup>®</sup>  
bluehorizon<sup>®</sup>



Stable 33.33 .ö.  
**MILTY**



Y O U R P A R T N E R W I T H S T R O N G B R A N D S

# epos

## Int`l Consumer Price List 2024/3

Valid from 01.05.2024



**Please note:**

This price list is intended for the internal use of authorized dealers. All previous price lists hereby lose their validity. The price list is only valid in conjunction with our general terms and conditions of business in the current version.

SRP = recommended retail price per pair including the applicable VAT.

**IDC Klaassen International**  
Distribution & Consulting oHG  
Am Brambusch 22  
44536 Lünen

Telefon: +49 (0) 231 22 17 88 22  
Telefax: +49 (0) 231-99 33 54 99  
E-Mail: [idc@idc-klaassen.com](mailto:idc@idc-klaassen.com)

This offer is subject to change. The price list and the prices contained therein are subject to change at any time. We reserve the right to make changes to product specifications without prior notice in the context of further developments. Errors and misprints excepted.



| Item No                                   | EAN Code      | SRP €    | Model / Color    |   | Brief description   |
|---|---------------|----------|------------------|---|---|
| <b>ES-28N (Available 4. Quartal 2024)</b> |               |          |                  |   |   |
| EP100300                                  | 9503121156577 | 7.990,00 | ES-28N WN • Pair | <br>Walnut       | <p>Frequency Response: below 30Hz – 25kHz</p> <p>Average Impedance: &gt;6 Ohm</p> <p>Minimum Impedance: 3,9 Ohm @ 16kHz</p> <p>Sensitivity: 86dB @2,83V / 1m</p> <p>Distortion: average below 0,2% THD @ 86dB between 100Hz + 10kHz</p> <p>Crossover Frequency: 330 Hz, 2700 Hz 2nd order LKR and 4th order LKR</p> <p>Bass Unit: Two High Power 7", 36 mm voice coil diameter, Hybrid Ferrite and Neodymium magnet, injection molded Straight cone with Mica filling. Low hysteresis rubber surround.</p> <p>HF Unit: 28 mm tweeter with Aluminum/Ceramic compound dome and no Ferrofluid</p> <p>Dimensions: 1050 x 250 x 360 mm (HBT)</p> <p>Weight: 35Kg</p> <p>Cabinet: Reflex loaded, damped Sandwich panels, one dimensional braces, Low Noise Port, Duo layer</p> <p>Terminal: Custom made Low Metal Mass 4 mm Banana terminal</p> |
| EP100301                                  | 9507124375584 | 7.990,00 | ES-28N WH • Pair | <br>White        |   |
| EP100302                                  | 9506887583748 | 7.990,00 | ES-28N BK • Pair | <br>Black       |   |
| EP100303                                  | 9501972335424 | 7.990,00 | ES-28N JG • Pair | <br>Jade Green |   |

| Item No       | EAN Code                       | SRP €    | Model / Color                           | Brief description   |
|---------------|--------------------------------|----------|---|---|
| <b>ES-14N</b> |                                |          |   |   |
| EP200100      | 0676424993534<br>0676424993541 | 4.600,00 | ES-14N BK • Pair Black + Stand          |  <p style="text-align: right;"><b>Black</b></p>        |
| EP100100P     | 0676424993534                  | 3.999,00 | ES-14N BK • Pair no stand               |   |
| EP200101      | 0676424993534<br>0676424993541 | 4.600,00 | ES-14N WH • Pair White + Stand<br>Black |  <p style="text-align: right;"><b>White</b></p>        |
| EP100101P     | 0676424993534                  | 3.999,00 | ES-14N WH • Pair no stand               |   |
| EP200102      | 0676424993534<br>0676424993541 | 4.600,00 | ES-14N WN • Pair Walnut + Stand         |  <p style="text-align: right;"><b>Walnut</b></p>      |
| EP100102P     | 0676424993534                  | 3.999,00 | ES-14N WN • Pair no stand               |   |
| EP200103      | 0676424993534<br>0676424993541 | 4.600,00 | ES-14N WB • Pair Water Blue +<br>Stand  |  <p style="text-align: right;"><b>Water Blue</b></p> |
| EP100103P     | 0676424993534                  | 3.999,00 | ES-14N WB • Pair no stand               |   |
|               |                                |          |   | <p><b>The ES-14N stand is also available separately as a pair. - see page 5</b></p>   |

Frequency Response: 40Hz 23kHz ( 6dB)  
33Hz-25kHz ( 10dB)

Average Impedance: > 6 Ohm

Minimum Impedance: 4.3 Ohm @ 160Hz

Sensitivity: 87dB @2.823V / 1m

Distortion: 0.2% THD @ 1W

Crossover Frequency: 2700 Hz





Bass Unit: High Power 7", 35 mm voice coil diameter , Hybrid Ferrite and Neodymium magnet , injection molded cone with variable thickness and Mica filling . Low hysteresis rubber surround

HF Unit: 28 mm tweeter with Aluminum Ceramic compound dome and no Ferrofluid

Dimensions: 491 x 250 x 385 mm (HWD)  
Fuß: empf. Höhe 515 mm

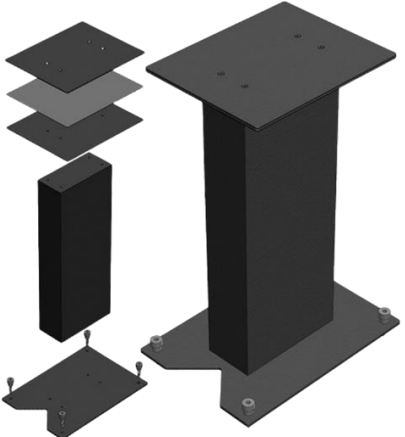
Weight: 16 kg ohne Fuß

Cabinet: Reflex loaded , damped Sandwich panels , one dimensional braces , Low Noise Port, Duo Frontpanel

| Item No      | EAN Code      | SRP €    | Model / Color  |   | Brief description  |
|--------------|---------------|----------|--|---|--|
| <b>ES-7N</b> |               |          |  |   |  |
| EP100200     | 9506585497217 | 1.999,00 | ES-7N WN • Pair  | <br>Walnut   | Frequency Response: 48 Hz -28.000 Hz<br>Average Impedance: 5 Ohm<br>Minimum Impedance: 3,5 Ohm @ 15kHz<br>Snsitivity: 86dB free, 89Db wall @2,83V<br>Distortion: Average less 0,3%<br>Crossover Frequency: 2000 Hz<br><br>Bass Unit: 130 mm<br>Low Unit: 28 mm<br><br>Dimenssions: 28 x 20 x 27 cm<br>Weight: 7,6 Kg<br>Cabinet: Bassrefelex |
| EP100201     | 9506316364283 | 1.999,00 | ES-7N WH • Pair  | <br>White    |  |
| EP100202     | 9502357672875 | 1.999,00 | ES-7N BK • Pair  | <br>Black    |  |
| EP100203     | 9506619757997 | 1.999,00 | ES-7N OR • Pair  | <br>Orange |  |
| EP100199     |               | 499,00   | Stand for ES-7N • fillable • Pair                        |   |  |
| EP100198     |               | 8,00     | Inert Filler for ES-7N Stand • piece<br>• ca.1,7 KG/1,1L |   |  |
|              |               |          |  |   | <b>For more information see page 5</b>   |

| Art.-Nr. | EAN Code | UVP € | Model / Farbe | Kurzbeschreibung |
|----------|----------|-------|---------------|------------------|
|----------|----------|-------|---------------|------------------|

### ES-14 Stand

|          |               |        |                     |   |   |
|----------|---------------|--------|---------------------|---|---|
| EP100099 | 0676424993541 | 800,00 | ES-14N Stand • Pair |  | <p>To give the speaker a home to sit on, a dedicated stand is available. The middle part is made as a massive wooden bar, combining 4 layers of wood, glued together with same damping glue used internally in the ES14N. The top plate is a double layer steel plate with a Bitumen layer in between and the bottom plate is a thick steel plate to hold adjustable spikes. The Speaker can be shipped without a stand, so other 55cm high stands can be used as well. .</p> |
|----------|---------------|--------|---------------------|---|---|

### ES-7N Stand

|          |   |        |   |   |  |
|----------|---|--------|---|---|--|
| EP100199 | - | 499,00 | Stand for ES-7N • fillable • Pair                     |   | <p>Feet with 4 mm acoustic steel insulation top plates, damped layer system made of patented polymer that converts resonance energy into negligible heat. Dimensions of the mounting plates are 190 x 245 mm and matching holes to create a screw connection with the housing. Base plate dimensions 230 x 270 x 4 mm. Steel base plate made of CR4 steel with cable management. Black galvanised M8 floor insulation spikes.M8 black galvanised, easily accessible, complementary spike covers. Standard height:700 mm, without floor spike (25 mm)</p> |
| EP100198 |   | 8,00   | Inert Filler for ES-7N Stand • piece • ca.1,7 KG/1,1L |  |  |

# epos

OVER 40 YEARS ...

1983

Epos Loudspeakers was founded in 1983 by Robin Marshall. Robin was responsible for the companies' iconic Epos loudspeakers in the 1980's onwards. Robin's "trademark" was to make sure the drive units integrated well and therefore he was able to use simple crossover designs. The models of those times were very well reviewed and the brand had a big following.

1988

In 1988 Epos was sold to Mordaunt-Short who had been bought by the TGI PLC group in 1987. Also in 1988 TGI PLC acquired the Creek Audio brand. Epos loudspeakers and Creek Audio electronics were sold side by side worldwide under Mordaunt-Short's management. In 1994 Creek Audio was sold back to its founder Mike Creek.

1999

In 1999 TGI PLC group decided to close the Epos/Mordaunt-Short operations. The Epos loudspeaker part was sold to Michael Creek, the owner and managing director of Creek Audio Ltd.

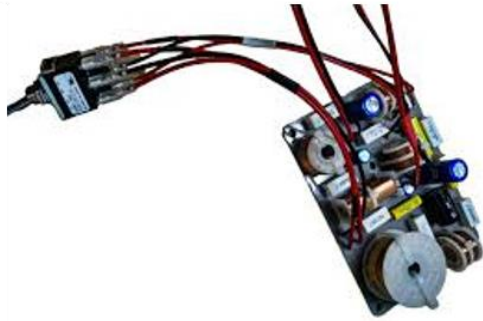
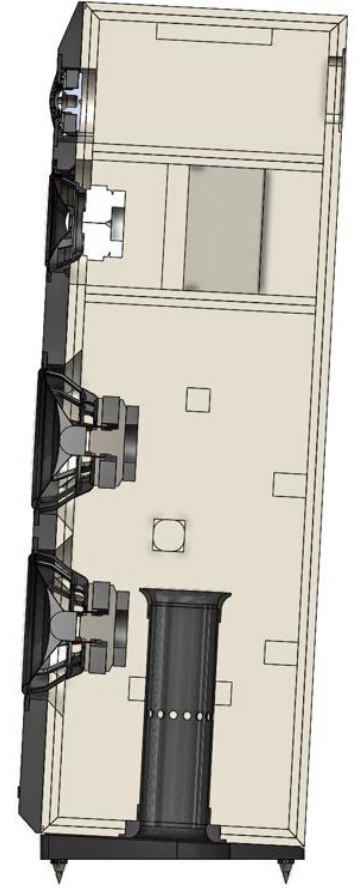
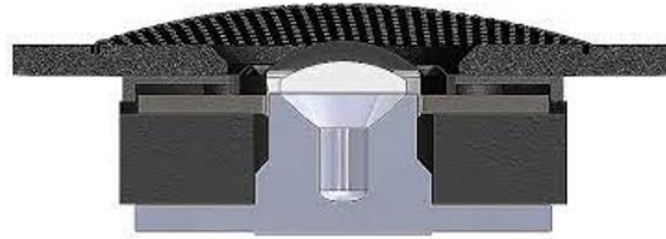
2020

In 2020 Creek sold the Epos Loudspeaker brand to Karl-Heinz Fink, founder of German speaker designer firm FinkTeam and also head of acoustic design consultancy Fink Audio Consulting. Karl-Heinz had always been interested in the Epos design philosophy and knew he could update that philosophy with more modern design and engineering techniques.

In an interview with Robin Marshall made in the 80's Robin said clearly that he designed the speakers based on the ideas and know-how he had at that time – not more and not less. That sounded like the Fink Audio way.....trying to stretch boundaries and not copying the past.



# epos





# PREMIUM AUDIO SOLUTIONS



FOR MORE INFORMATION PLEASE CONTACT

**IDC Klaassen International Distribution & Consulting oHG**  
Am Brambusch 22 • D-44536 Lünen • Germany  
E-Mail: [idc@idc-klaassen.com](mailto:idc@idc-klaassen.com) | Tel: +49 (0) 231 22 17 88 22  
[www.idc-klaassen.com](http://www.idc-klaassen.com)

Design and specifications are subject to change without notice and errors excepted..